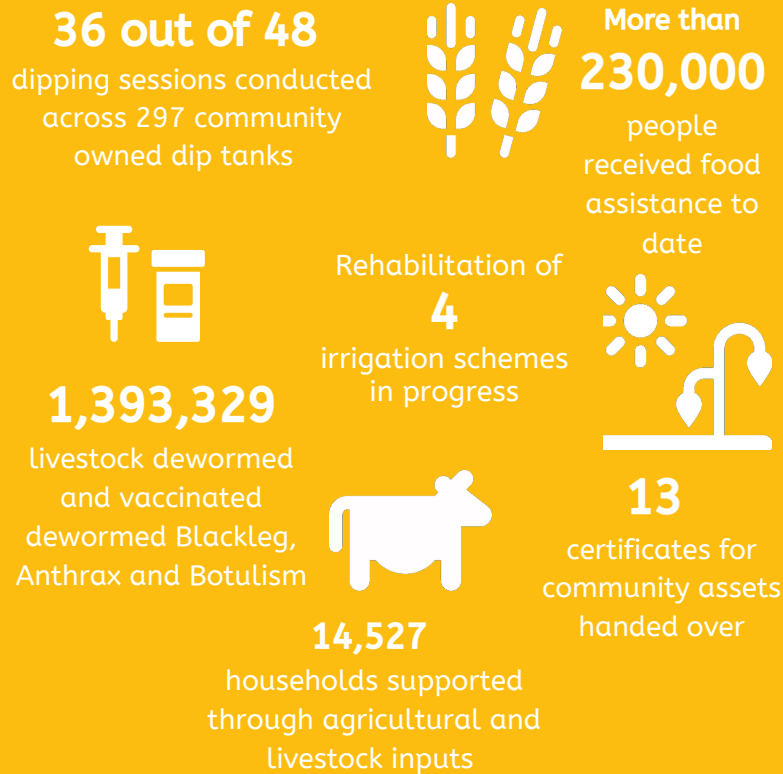
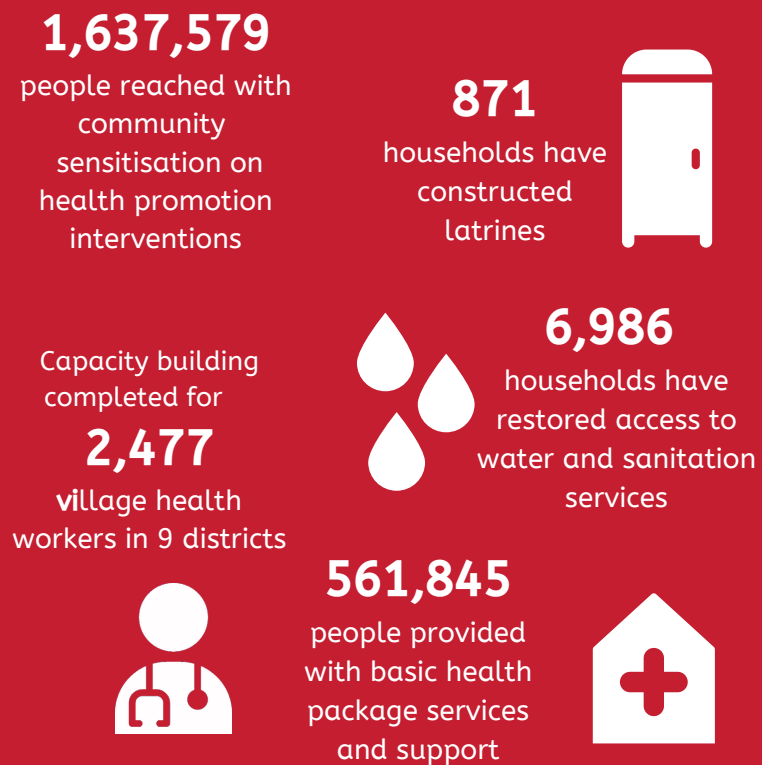


ZIRP Overview March 2021

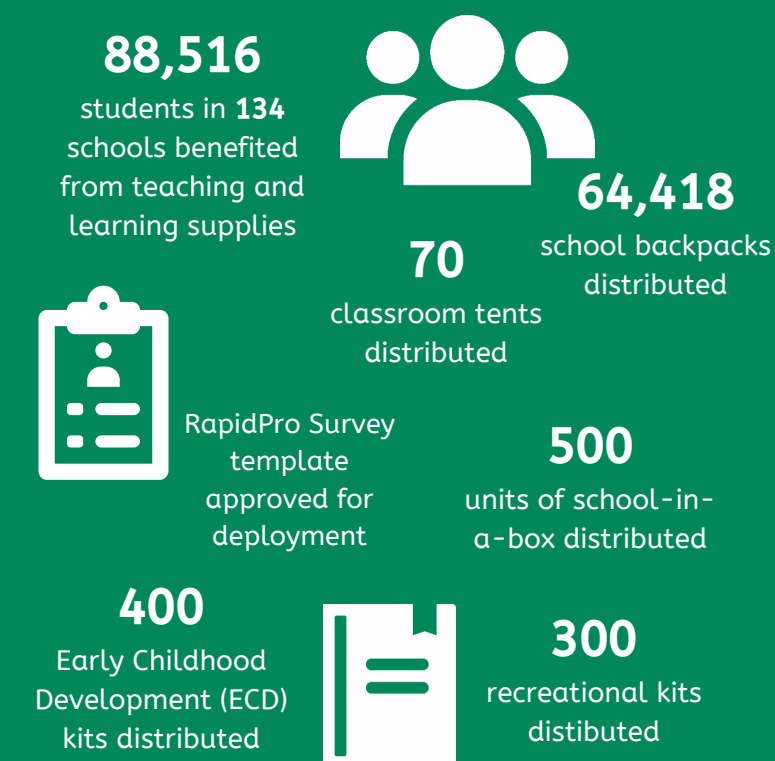
Food Security and Livelihoods



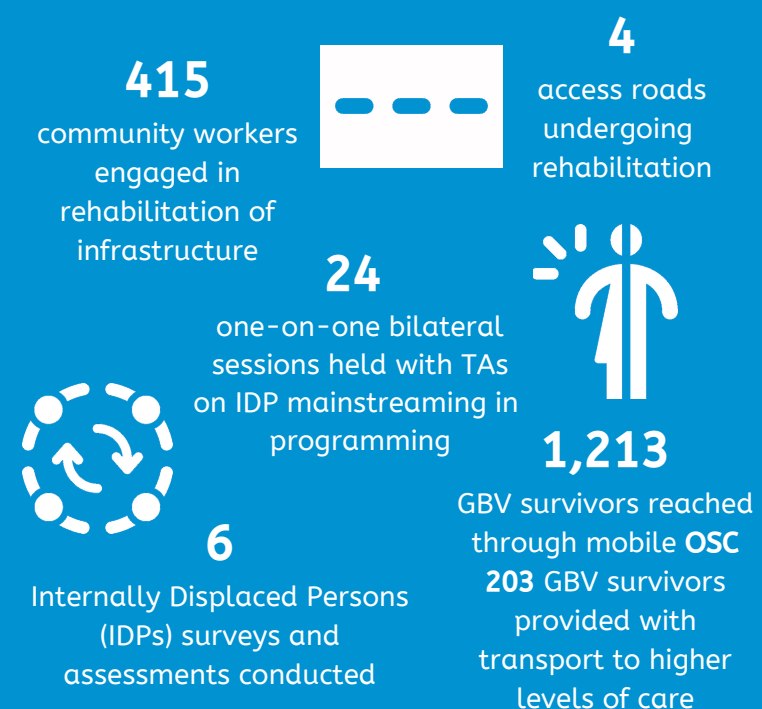
Health & WASH



Education



Cross-Cutting Elements



COVID-19 Response



2

four-wheel drive vehicle purchased to strengthen disease surveillance and response, with 1 PCR/extraction machine completed; and procurement of 4 ambulances in final stages

16

Environmental Health Technicians (EHTs) were trained on disease surveillance



2,476

VHWs in all the 9 ZIRP-targeted district received refresher training on integrated COVID-19 prevention, community-based surveillance and home-based IPC

812

community peer supervisors were identified and oriented on supportive supervisory, mentorship and coaching skills



580

VHWs recruited, trained and deployed increasing the coverage in the targeted districts to at least 81% of villages with VHWs



Health workers provided with laptops, tablets and phones to use in disease surveillance



56

health workers from 19 Health Facilities (7 ZIRP-supported mission hospitals and 12 Regional Council Clinics) were trained on case management and IPC

18

motorcycles procured for delivery specimen transportation



1,344

specimens have been transported to government labs for testing



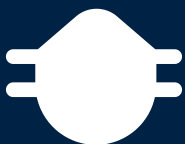
10

art murals have been completed for community messaging targeting nearly 2.5 million people indirectly in the 9 ZIRP districts



5

ZIRP-supported mission hospital labs received supplies and consumables



4,276

UNICEF VHWs and 9 UNICEF Health training centres in Chimanimani and Chipinge districts received PPEs and IPC



design for a 12-bed

isolation ward at St. Peter's Mission Hospital has been approved

In addition to procurement of PPE, ZIRP is supporting the health systems response to COVID-19 through capacity strengthening at institutional and community level by reinforcing COVID-19 surveillance, lab support, case management, IPC, including RCCE and continuity of essential services in line with the COVID-19 National Response Plan and priorities.